

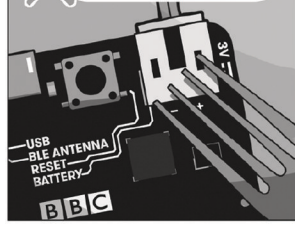
BBC



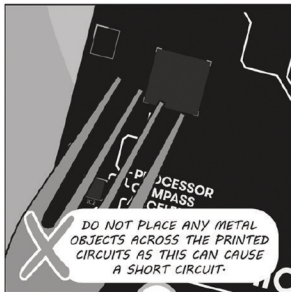
micro:bit

SAFETY WARNINGS

X DO NOT PLACE ANY METAL OBJECT ACROSS THE BBC MICRO:BIT BATTERY SOCKET.



X DO NOT PLACE ANY METAL OBJECTS ACROSS THE PRINTED CIRCUITS AS THIS CAN CAUSE A SHORT CIRCUIT.



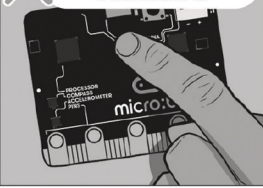
X DO NOT USE YOUR BBC MICRO:BIT IN WATER OR WITH WET HANDS.



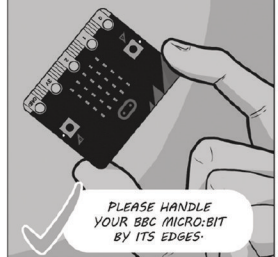
X DO NOT LEAVE YOUR BBC MICRO:BIT PLUGGED INTO ANY DEVICE UNSUPERVISED.



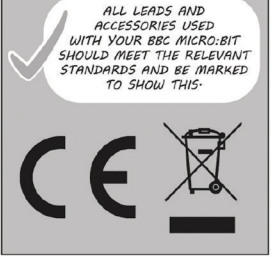
X PLEASE AVOID HANDLING THE BBC MICRO:BIT CIRCUIT BOARD WHILE PLUGGED INTO A POWER SUPPLY.



✓ PLEASE HANDLE YOUR BBC MICRO:BIT BY ITS EDGES.



✓ ALL LEADS AND ACCESSORIES USED WITH YOUR BBC MICRO:BIT SHOULD MEET THE RELEVANT STANDARDS AND BE MARKED TO SHOW THIS.



X CONNECTING YOUR BBC MICRO:BIT TO ANYTHING UNAPPROVED COULD DAMAGE IT.



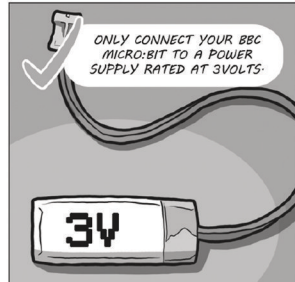
X PLEASE DO NOT LEAVE YOUR BBC MICRO:BIT WITHIN REACH OF CHILDREN UNDER 8 YEARS.



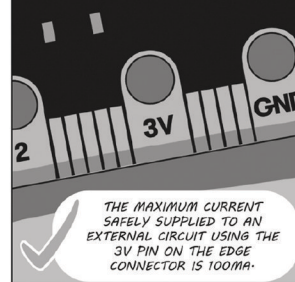
✓ PLEASE OPERATE YOUR BBC MICRO:BIT IN A WELL VENTILATED ROOM.



✓ ONLY CONNECT YOUR BBC MICRO:BIT TO A POWER SUPPLY RATED AT 3VOLTS.



✓ THE MAXIMUM CURRENT SAFELY SUPPLIED TO AN EXTERNAL CIRCUIT USING THE 3V PIN ON THE EDGE CONNECTOR IS 100mA.

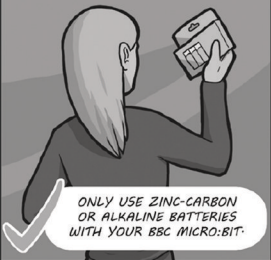


X PLEASE DO NOT STORE OR USE YOUR BBC MICRO:BIT IN EXTREMELY HOT OR COLD ENVIRONMENTS.

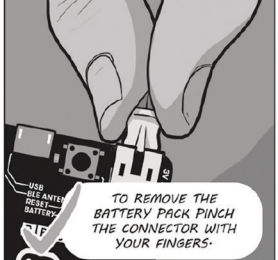


BATTERY WARNINGS

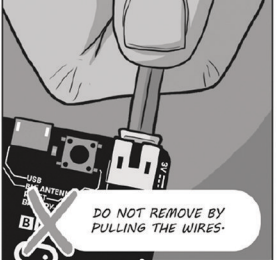
✓ ONLY USE ZINC-CARBON OR ALKALINE BATTERIES WITH YOUR BBC MICRO:BIT.



✓ TO REMOVE THE BATTERY PACK PINCH THE CONNECTOR WITH YOUR FINGERS.



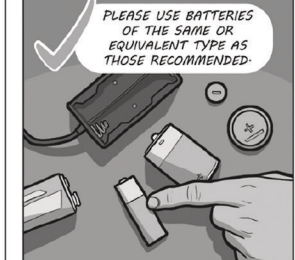
X DO NOT REMOVE BY PULLING THE WIRES.



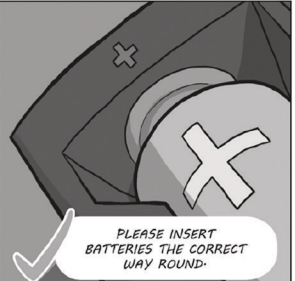
X PLEASE DO NOT MIX DIFFERENT TYPES OF BATTERIES OR MIX NEW AND USED BATTERIES.



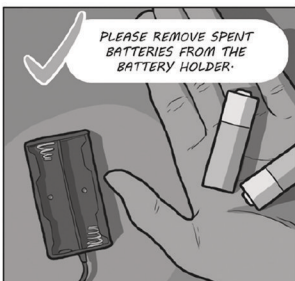
✓ PLEASE USE BATTERIES OF THE SAME OR EQUIVALENT TYPE AS THOSE RECOMMENDED.



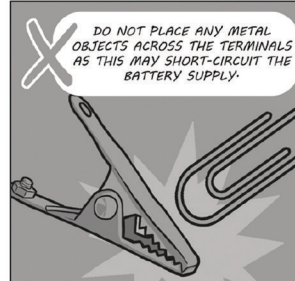
✓ PLEASE INSERT BATTERIES THE CORRECT WAY ROUND.



✓ PLEASE REMOVE SPENT BATTERIES FROM THE BATTERY HOLDER.



X DO NOT PLACE ANY METAL OBJECTS ACROSS THE TERMINALS AS THIS MAY SHORT-CIRCUIT THE BATTERY SUPPLY.



X DO NOT TRY TO CHARGE NORMAL (NON-RECHARGEABLE) BATTERIES.

